

COOPERATION AND OPERATION RANGE

Symbol	ROP-01	ROP-02	ROB-01	SRP-02	SRP-03	RWG-01	RWL-01	ROM-01	ROM-10	RDP-01	RTN-01
RNK-02	180 m	200 m	200 m	200 m	200 m	250 m	180 m	250 m	250 m	180 m	250 m
RNK-04	180 m	200 m	200 m	200 m	200 m	250 m	180 m	250 m	250 m	180 m	250 m
P-256/8	230 m	250 m	250 m	250 m	250 m	300 m	200 m	300 m	300 m	230 m	300 m
P-257/4 (2)	180 m	200 m	200 m	200 m	200 m	250 m	180 m	250 m	250 m	180 m	250 m
RNM-10	230 m	250 m	250 m	250 m	250 m	300 m	200 m	300 m	300 m	230 m	300 m
RNP-01	160 m	180 m	180 m	180 m	180 m	200 m	160 m	200 m	200 m	160 m	200 m
RNP-02	160 m	180 m	180 m	180 m	180 m	200 m	160 m	200 m	200 m	160 m	200 m
RNL-01	160 m	180 m	180 m	lack*	lack*	200 m	160 m	200 m	200 m	160 m	200 m
RTN-01	200 m	200 m	200 m	200 m	200 m	250 m	200 m	250 m	250 m	200 m	250 m
RCR-01	160 m	180 m	180 m	lack*	lack*	200 m	160 m	200 m	200 m	160 m	200 m
RTI-01	160 m	180 m	180 m	180 m	180 m	200 m	160 m	200 m	200 m	160 m	200 m
RXM-01	230 m	250 m	250 m	250 m	250 m	300 m	200 m	300 m	300 m	230 m	300 m

* 1-channel transmitters do not cooperate with roller blind controllers.

CAUTION: The given range concerns open area - an ideal condition without any natural or artificial obstacles. If there are some obstacles between a transmitter and a receiver, it is advisable to decrease the range according to: wood and plaster - from 5 to 20, bricks - from 10 to 40 %, reinforced concrete - from 40 to 80%, metal - from 90 to 100%, glass - from 10 to 20%. Over- and underground medium and high electrical power lines, radio and television transmitters, GSM transmitters set close to a device system have also a negative influence on the range.

2-CHANNEL BUTTON RADIO TRANSMITTER

RNK-02

TECHNICAL DATA

Input rated voltage:	3 V DC
Battery type:	CR2032
Battery working life:	3 ÷ 5 years (depending on use)
Number of channels:	2
Transmission:	radio 868,32 MHz
Transmission way:	unidirectional
Coding:	addressing transmission
Range:	up to 250 m in the open area
Optical signalling of transmission/ battery discharge:	LED red diode
Ambient temperature range:	-10 ÷ +55 °C
Operating position:	free
Casing mounting:	wall plugs, double-sided adhesive tape
Casing protection degree:	IP20 (EN 60529)
Protection level:	III
Pollution degree:	2
Dimensions:	90 x 80 x 11,5 mm
Weight:	0,038 kg
Reference standard:	PN-ETSI EN 300 220-1, PN-ETSI EN 300 220-2

DESCRIPTION

RNK-02 button radio transmitter is an EXTA FREE wireless control, radio device. It is used to realise control functions: switching on, switching off, brightening/dimming, putting up/down roller blinds, time operation mode. The transmitter can be mounted on any surface including glass, wood, etc. thanks to its little size and weight, and external power supply which is not necessary.

FEATURES:

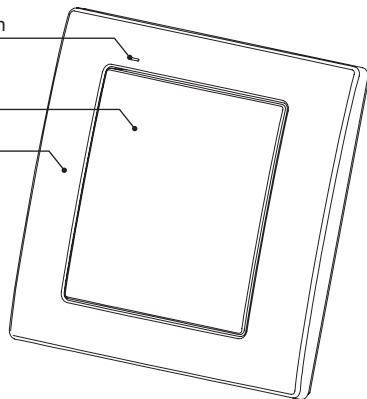
- 2-channel button radio transmitter,
- remote control of EXTA FREE receivers,
- possibility of independent control of two receivers,
- wide range of operation (up to 250 m), battery powered,
- easy installation and mounting possibility in any place,
- sending information and battery status are optically signalled,
- possibility of simultaneous switching on / off of any number of EXTA FREE receivers.

APPEARANCE

Optical signalling of transmitter's operation

Button

Base



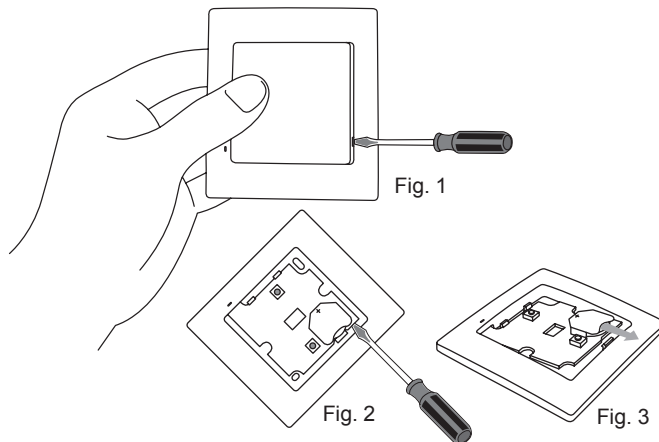
MOUNTING, FUNCTIONING

By pressing the button, the transmitter sends a signal with 868,32 MHz frequency which controls EXTA FREE receivers. **Device programming procedure (adding a transmitter to a receiver's memory) is described in particular EXTA FREE manual instructions. The device range (up to 250 m depending on a receiver) can be increased by means of a retransmitter or few RTN-01 retransmitters.**

The device can be mounted in any place by means of double-sided adhesive tape or wall plugs 5 x (3 x 30) mm.

Mounting by means of wall plugs:

- ➊ Remove the button - to do it press the button on one side, and on the other side put a screwdriver into a slot and lift up the button (Fig. 1)
- ➋ Find a place on the wall to mount the transmitter, make two holes corresponding mounting holes from the transmitter's base.
- ➌ Set wall plugs in the holes.
- ➍ Fix the base by means of screwing screws into wall plugs.
- ➎ Place the button again.



BATTERY CHANGE

Battery discharge status is signalled by several LED red diode flashes during transmission time.

- ➊ Remove the button (Fig. 1).
- ➋ By means of a screwdriver lever up the printedcircuit board releasing the bottom latch (Fig. 2), and remove it from the base.
- ➌ Remove the battery from the latch (Fig. 3).
- ➍ Mount a new battery. Watch battery polarisation marked on the latch. Wrong battery mounting may cause device damage.
- ➎ Put the removed printed-circuit board back in the base.
- ➏ Put the button back.

CAUTION: While changing the battery, it is suggested to press any of the buttons for about 5 seconds before putting it into a latch. Next press transmission button several times to check its operation. If the transmitter does not work properly repeat the battery change procedure.