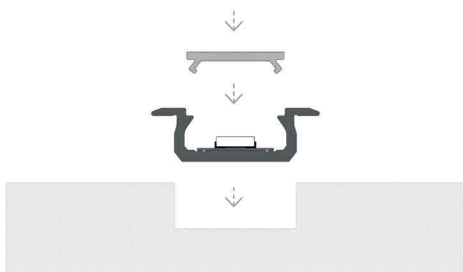
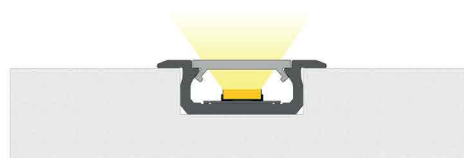


fig. 1



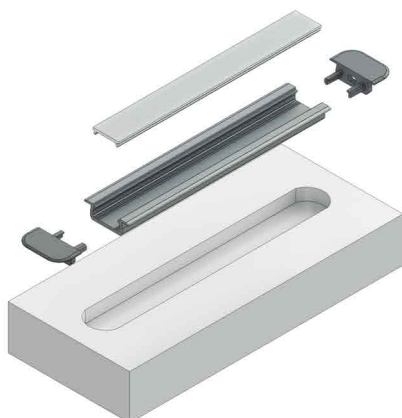
Installation instructions for groove mounted profile Z with a BASIC cover

fig. 2



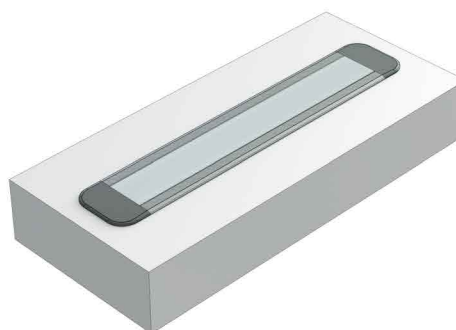
The end result of installation of groove mounted profile Z with a BASIC cover

fig. 3



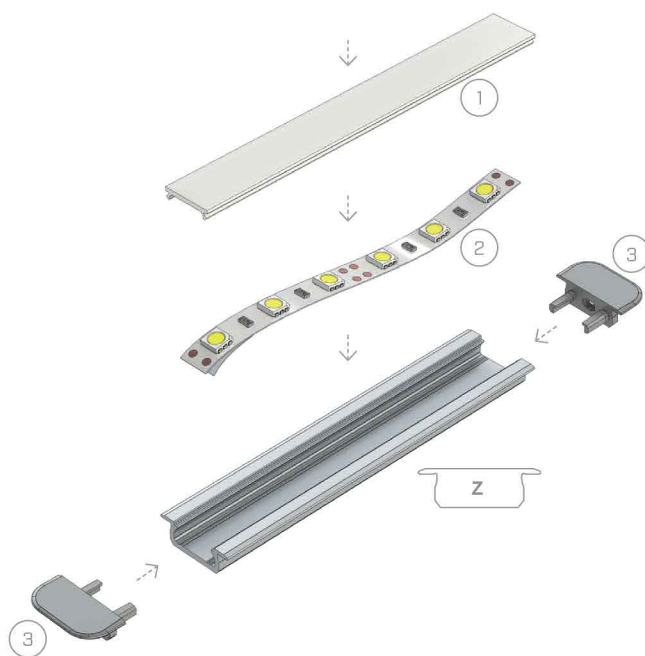
Isometric view before mounting profile Z inside milled hole with round end cap

fig. 4



Installation of profile Z inside the milled hole in plaster board

fig. 5



Assembly scheme for elements of the lighting system using profile Z and (1) BASIC cover, (2) a LED strip, (3) end caps with holes