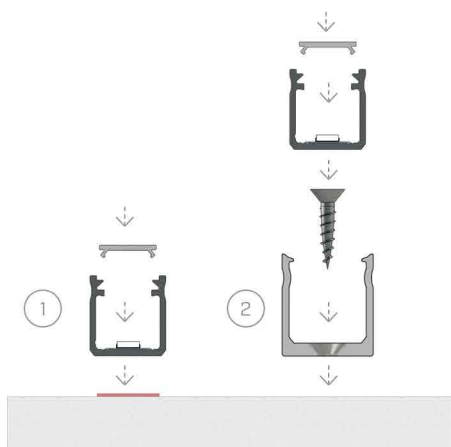




Installation diagrams

fig. 1



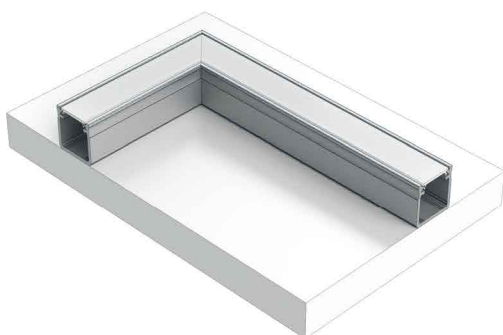
Installation instructions for profile Y with a BASIC cover using
[1] double-sided tape, [2] a mounting clip and screw

fig. 2



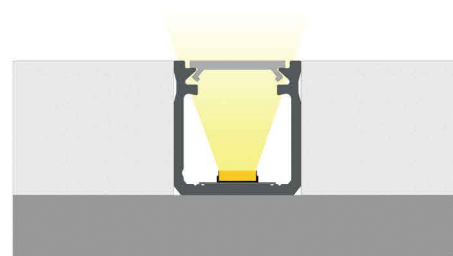
The end result of installation of profile Y with a BASIC cover using
[1] double-sided tape, [2] a mounting clip and screw

fig. 3



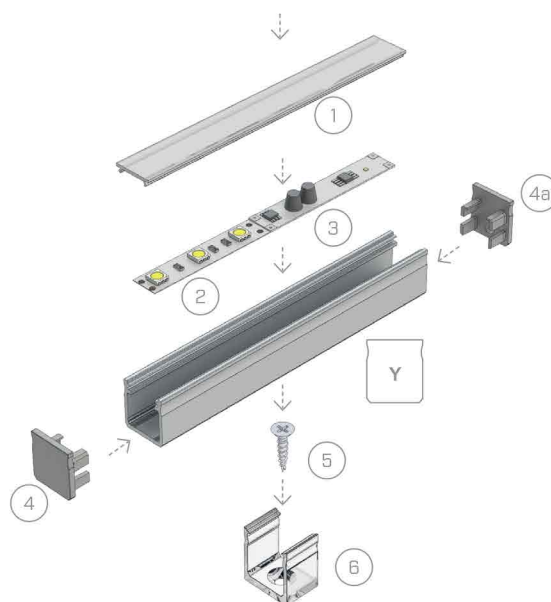
Connecting profiles Y with a BASIC cover at 90 degrees

fig. 4



The end result of installation of groove mounted profile Y
with BASIC cover between the boards

fig. 5



Assembly scheme for elements of a lighting system using profile Y and [1] a BASIC cover, [2] a LED strip,
[3] a contactless switch, [4] end cap without hole, [4a] end cap with hole, [5] screw, [6] mounting clip