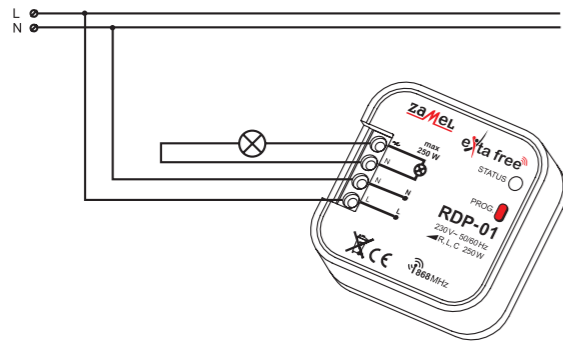


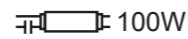
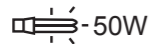
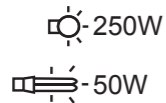
CONNECTION



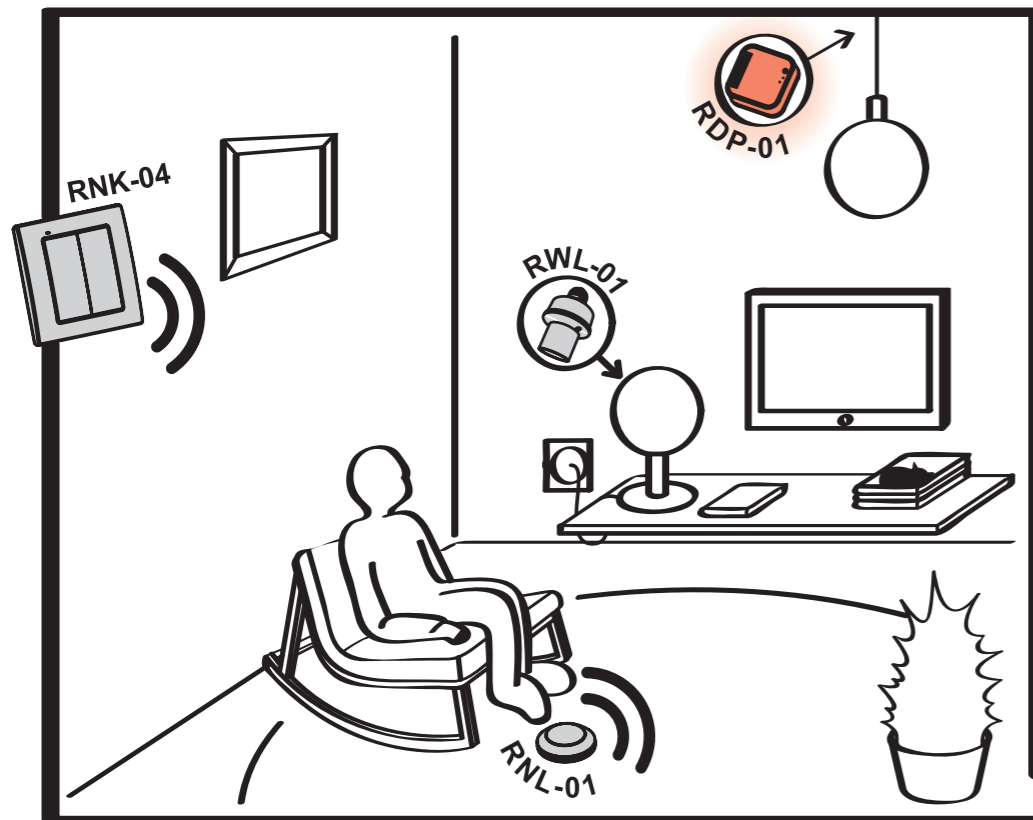
MOUNTING RDP-01

1. Disconnect power supply by the phase fuse, the circuit-breaker or the switch-disconnector combined to the proper circuit.
2. Check if there is no voltage on connection cables by means of a special measure equipment.
3. Connect the cables with the terminals in accordance with the installing diagram.
4. Install RDP-01 device in installation cable box.
5. Switch on the power supply from the mains.

CAPACITY



APPLICATION



Radio dimmer RDP-01 operating as a receiver of 4-channel button radio transmitter RNK-04 (switch on/switch off control, lighting source brightening/dimming). The above mentioned transmitters can also control operation of radio lighting switch RWL-01.



The ZAMEL company devices which are characterised with this sign can cooperate with each other.

WARRANTY CARD

There is 24 months guarantee on the product

1. ZAMEL provides a two-year warranty for its products.
2. The ZAMEL warranty does not cover: a) mechanical defects resulting from transport, loading / unloading or other circumstances b) defects resulting from incorrect installation or operation of ZAMEL products; c) defects resulting from any changes made by CUSTOMERS or third parties, to products sold or equipment necessary for the correct operation of products sold; d) defects resulting from force majeure or other aleatory events for which ZAMEL is not liable; e) power supply (batteries) to be equipped with a device in the moment of sale (if they appear);
3. All complaints in relation to the warranty must be provided by the CUSTOMER in writing to the retailer after discovering a defect.;
4. ZAMEL will review complaints in accordance with existing regulations.;
5. The way a complaint is settled, e.g. replacement of the product, repair or refund, is left to the discretion of ZAMEL.
6. Guarantee does not exclude, does not limit, nor does it suspend the rights of the PURCHASER resulting from the discrepancy between the goods and the contract.

Salesman stamp and signature, date of sale

1-CHANNEL RADIO DIMMER RDP-01

MANUAL INSTRUCTION



ZAMEL Sp. z o.o.

ul. Zielona 27, 43-200 Psczynna, Poland
tel. +48 (32) 210 46 65, fax +48 (32) 210 80 04
www.zamelcet.com, e-mail: marketing@zamel.pl

ZAMEL

DESCRIPTION

Radio dimmer RDP-01 cooperates with light bulbs, compact fluorescent lamps powered by electronic or toroidal power supply transformers. The device has different functions: a traditional lighting dimmer function, time control functions (staircase time delay switch), comfort functions (memory of adjusted luminous density level).

FEATURES

- cooperation with wireless EXTA FREE system transmitters,
- light sources switching on/switching off, brightening/dimming,
- cooperation with light bulbs, compact fluorescent lamps powered by electronic or toroidal power supply transformers,
- memory of adjusted luminous density level,
- easy installed in Ø60 mm junction box,
- wide operation range (up to 230 m),
- operation is optically signalled,
- low current consumption, possibility of constant work
- possibility of widening operation range by means of RTN-01 retansmitter.



CAUTION!

The device is designed for single-phase installation and must be installed in accordance with standards valid in a particular country. The device should be connected according to the details included in this operating manual. Installation, connection and control should be carried out by a qualified electrician staff, who act in accordance with the service manual and the device functions. In case of casing dismantling an electric shock may occur, and the guarantee is lost then. Before installation make sure the connection cables are not under voltage. The cruciform head screwdriver 3,5 mm should be used to instal the device. Improper transport, storage, and use of the device influence its wrong functioning. It is not advisable to instal the device in the following cases: if any device part is missing or the device is damaged or deformed. In case of improper functioning of the device contact the producer.



The symbol means selective collecting of electrical and electronic equipment. It is forbidden to put the used equipment together with other waste.

TECHNICAL DATA

RDP-01	
Input (supply) terminals:	L, N
Input rated voltage:	230 V AC
Input voltage tolerance:	-15 ÷ +10 %
Nominal frequency:	50 / 60 Hz
Nominal power consumption:	0,5 W
Number of operation modes:	5
Number of channels:	1
Transmission:	radio 868,32 MHz
Transmission way:	unidirectional
Coding:	addressing transmission
Maximum number of transmitters:	32
Range:	up to 230 m in the open area
Time adjustment:	1 sec ÷ 18 hours (every 1 sec.)
Sygnalizacja optyczna pracy:	LED red diode
Receiver's output clamps:	~, N
Maximum output load:	250 W
Number of terminal clamps:	4
Section of connecting cables:	up to 2,5 mm ²
Ambient temperature range:	-10 ÷ +55 °C
Operating position:	free
Casing mounting:	installation cable box Ø60 mm
Casing protection degree:	IP20 (EN 60529)
Protection level:	II
Overvoltage category:	II
Pollution degree:	2
Surge voltage:	1 kV (EN 61000-4-5)
Dimensions:	47,5 x 47,5 x 20 mm
Weight:	0,040 kg
Reference standard:	EN 60669, PN 60950, PN 61000

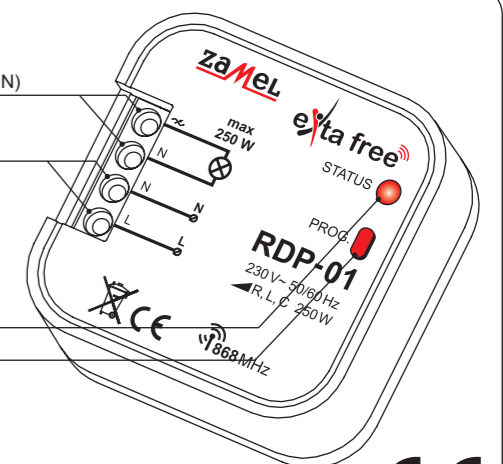
APPEARANCE

Receiver's input (supply) terminals (~, N)

Input (supply) terminals (L, N)

Optic signalling of receiver's operation

Programming push-button

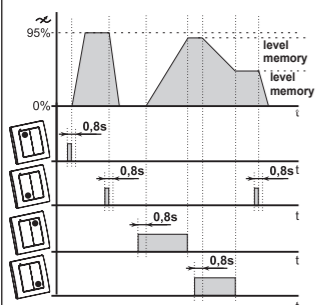
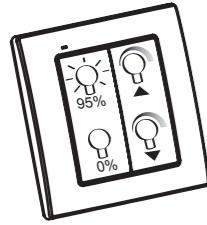


OPERATION

RDP-01 can operate in five modes:

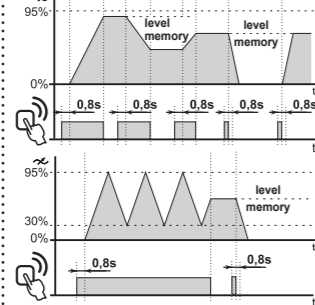
COMFORT

ON (Available only in cooperation with 4 push-button transmitter). In this mode the following two functions are realised:



ONE PUSH-BUTTON

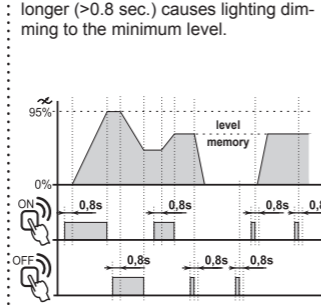
ON/OFF Pressing the programmed push-button shortly (<0.8 sec.) causes the dimmer to operate in the range of switch on/switch off (to the last adjustment of lighting luminous density level), however pressing the programmed push-button longer (>0.8 sec.) causes alternate lighting brightening - dimming.



TWO PUSH-BUTTONS

ON SWITCH ON push-button: pressing the programmed push-button shortly (<0.8 sec.) causes the lighting switches on according to the last adjustment of lighting luminous density level, however pressing the programmed push-button longer (>0.8 sec.) causes lighting brightening to the maximum level.

OFF SWITCH OFF push-button: pressing the programmed push-button shortly (<0.8 sec.) causes the lighting switches off, however pressing the programmed push-button longer (>0.8 sec.) causes lighting dimming to the minimum level.

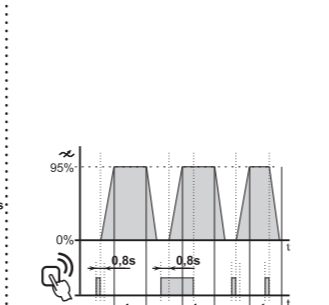


TIME

ON OFF The device after pressing the push-button switches on according to the adjusted time (tp), then it switches off automatically. Another pressing of the push-button during time countdown causes the lighting is switched off before adjusted time finishes.

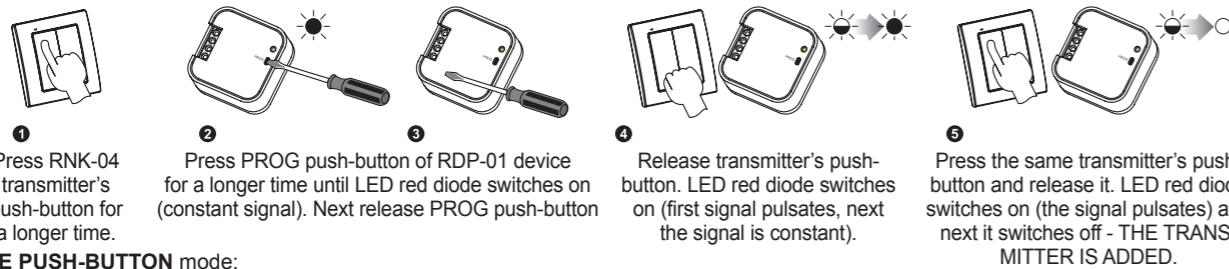
Default settings - 15 seconds.

CAUTION! Adjusted time cannot be deleted.

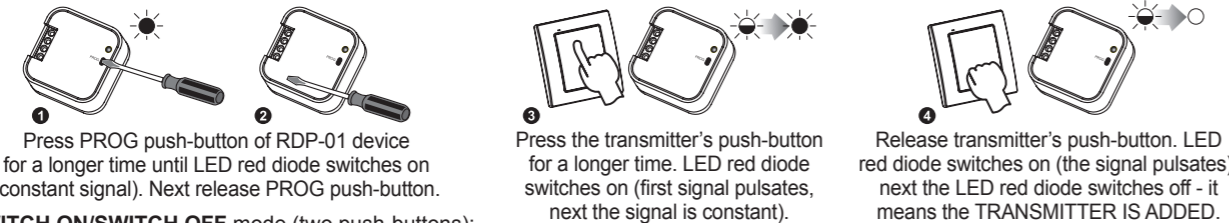


REMOTE CONTROLS PROGRAMMING

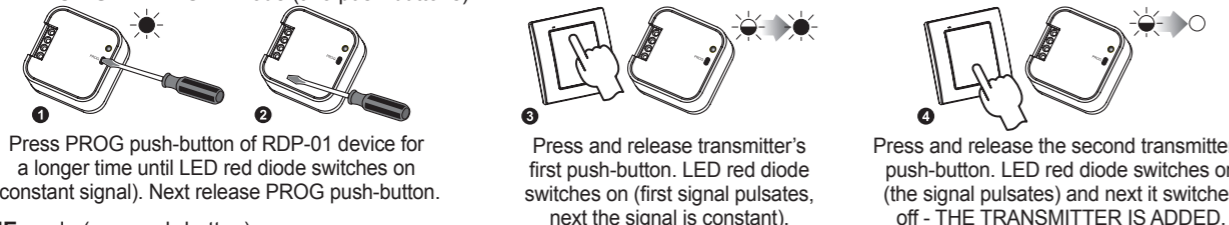
COMFORT mode:



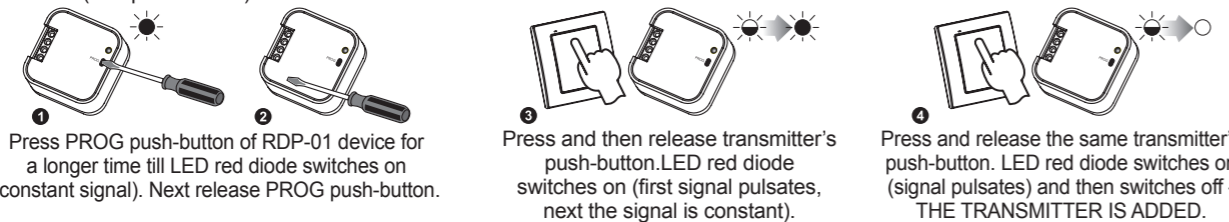
ONE PUSH-BUTTON mode:



SWITCH ON/SWITCH OFF mode (two push-buttons):



TIME mode (one push-button):



CAUTION: Every transmitter can cooperate with RDP-01 in a different mode, depending on how they were added to the device. One transmitter can be added during one programming cycle. Full memory is signalled with pulsating LED red diode.

TIME PROGRAMMING



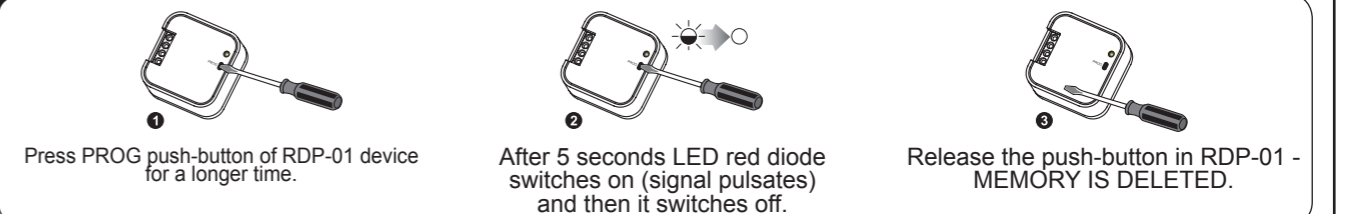
Press PROG push-button of RDP-01 device for a longer time till LED red diode switches on (constant signal). Next release PROG push-button. Wait (for about 5 seconds) till LED red diode switches on (first signal pulsates, next the signal is constant).

Press PROG push-button of RDP-01 device and then release it. LED red diode switches off and then switches on (signal pulsates). Every LED diode pulse equals 1 second.

After the adjusted time is finished (the number of LED red diode flashes) press PROG push-button and then release it - TIME IS ADDED.

Maximum time is 18 hours.

REMOTE CONTROLS DELETION



COOPERATION AND OPERATING RANGE

Symbol	ROP-01	ROP-02	ROB-01	SRP-02	SRP-03	RWG-01	RWL-01	ROM-01	ROM-10	RDP-01	RTN-01
RNK-02	180 m	200 m	200 m	200 m	200 m	250 m	180 m	250 m	250 m	180 m	250 m
RNK-04	180 m	200 m	200 m	200 m	200 m	250 m	180 m	250 m	250 m	180 m	250 m
P-256/8	230 m	250 m	250 m	250 m	250 m	300 m	200 m	300 m	300 m	230 m	300 m
P-257/4 (2)	180 m	200 m	200 m	200 m	200 m	250 m	180 m	250 m	250 m	180 m	250 m
RNM-10	230 m	250 m	250 m	250 m	250 m	300 m	200 m	300 m	300 m	230 m	300 m
RNP-01	160 m	180 m	180 m	180 m	180 m	200 m	160 m	200 m	200 m	160 m	200 m
RNP-02	160 m	180 m	180 m	180 m	180 m	200 m	160 m	200 m	200 m	160 m	200 m
RNL-01	160 m	180 m	180 m	lack*	lack*	200 m	160 m	200 m	200 m	160 m	200 m
RTN-01	200 m	200 m	200 m	200 m	200 m	250 m	200 m	250 m	250 m	200 m	250 m
RCR-01	160 m	180 m	180 m	lack*	lack*	200 m	160 m	200 m	200 m	160 m	200 m
RTI-01	160 m	180 m	180 m	180 m	180 m	200 m	160 m	200 m	200 m	160 m	200 m
RXM-01	230 m	250 m	250 m	250 m	250 m	300 m	200 m	300 m	300 m	230 m	300 m

* - 1-channel transmitters do not cooperate with roller blind controllers.

CAUTION: The given range concerns open area - an ideal condition without any natural or artificial obstacles. If there are some obstacles between a transmitter and a receiver, it is advisable to decrease the range according to: wood and plaster: from 5 to 20 %, bricks: from 10 to 40 %, reinforced concrete: from 40 to 80 %, metal: from 90 to 100%, glass: from 10 to 20 %, Over- and underground medium and high electrical power lines, radio and television transmitters, GSM transmitters set close to a device system have also a negative influence on the range.

TRANSMITTERS			RECEIVERS		
RNK-02 2-channel button radio transmitter		RNL-01 Radio foot transmitter		ROP-01 1-channel radio receiver	
RNK-04 4-channel button radio transmitter		RTI-01 IR/EXTA FREE transceiver		ROP-02 2-channel radio receiver	
P-256/8 8-channel remote controller		RNM-10 4-channel radio modular transmitter		RDP-01 1-channel radio dimmer	
P-257/4 4-channel remote controller		RNP-01 4-channel radio transmitter		ROB-01/12-24V Radio gate controller	
P-257/2 2-channel remote controller		RNP-02 4-channel radio transmitter		ROM-01 1-channel radio modular receiver	
RCR-01 Radio motion sensor		RXM-01 Translator RS-485/EXTA FREE			
ACCESSORIES					
ANT-01 External antenna			RTN-01 Retransmitter		