

Operation and installation manual KNX IP BAOS 777

(Art. # 5193)

Interface and ObjectServer between LAN and KNX Bus



Picture 1: Photo of the device



Picture 2: Typical application

Application

The KNX IP BAOS 777 from WEINZIERL is a universal IP Interface and IP Gateway for the KNX Installation Bus. BAOS stands for "Bus Access and Object Server" and provides an interface to KNX installations both on the telegram level (KNXnet/IP Tunneling) as well as on datapoint level (KNX Group Objects / KNX Application Layer) with semantic meta-data for rooms and functions. With its integrated web server, the device allows the visualization of buildings, rooms and functions in a standard web browser on a PC or mobile device.

The device provides these possibilities to access an installation:

As Programming Interface

- On telegram level (KNXnet/IP Tunneling)
- Can be used as bus interface for ETS® (Version 4.2 or higher)

As Residential Gateway

- Via KNX IP BAOS Binary Protocol
- Via KNX IP BAOS Web Services
- Via KNX IP BAOS RESTful Web Services

Via Web Application

- Using a standard web browser

KNX IP BAOS 777 as Programming Interface

The KNX IP BAOS 777 can be used as interface to the KNX Bus on the telegram level. It is compatible with the KNXnet/IP specification and can be used as bus interface for ETS® or other programs that support the KNXnet/IP Tunneling. It supports up to 8 simultaneous connections. The settings for the interface (e.g. IP configuration) can be done with all the ETS product entries that are available for this device.

KNX IP BAOS 777 as Residential Gateway

The KNX system is based on a specific protocol that is difficult to implement for non-KNX devices. The KNX IP BAOS 777 maps KNX data to an IT-friendly API (Application Programming Interface). It greatly reduces the effort to connect e.g. control or visualization tools to KNX. Also helpful is the storage of all data point values – even if the device is not connected.

The KNX BAOS architecture not only allows access to the runtime data, but also to the structure of the KNX installation. All information about rooms in a building and the available functions can be read as metadata from a client. With the ETS, the rooms and the functions are defined, which should be available to the user.

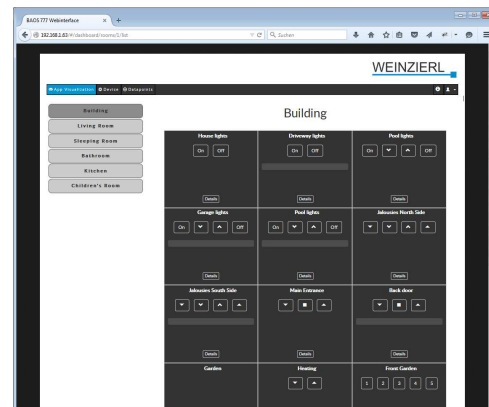
The KNX IP BAOS protocol is available in three different versions:

- *KNX IP BAOS Binary*. A binary protocol that is especially suitable for small microcontroller.
- *KNX IP BAOS Web Services*: A URL-based protocol with JSON syntax compatible with KNX IP BAOS 771 and 772.
- *KNX IP BAOS RESTful Web Services*: A URL-based protocol with RESTful JSON syntax, which can be integrated into browser-based web applications.

The KNX IP BAOS 777 also features time and recording functions available on the BAOS protocol.

KNX IP BAOS 777 via Web Browser

The KNX IP BAOS 777 has an integrated web server that allows access to the device settings in a standard web browser. With the help of the ETS product entry with building structure the web server also offers visual representations of the entire KNX installation including visualization of the building, rooms and functions.



The data from the Residential Gateway are graphically displayed in the browser and the functions can be operated directly via the web interface. Timers are also available via the web server.

KNX IP BAOS 777 as application specific Gateway

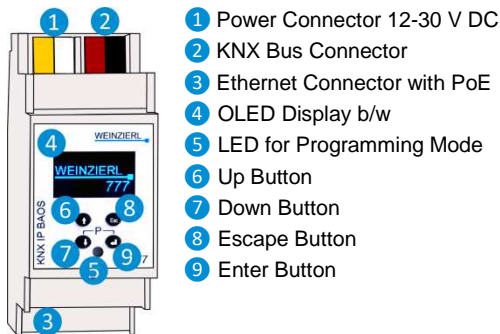
To connect to non-KNX systems, the KNX IP BAOS 777 can be used as an application specific Gateway (e.g. to connect heating devices, audio applications and many more). In this case the generic ETS product entry (with up to 2000 data points) can be used for development purposes. Of course, individual product entries can be developed. The datapoint types can be individually configured via ETS parameters.

BAOS SDK

Both for the use of the KNX IP BAOS 777 as a Residential Gateway as well as for the development of application-specific solutions the BAOS protocol must be implemented in the client. For a quick and easy integration of BAOS Binary Services a free SDK is available. More information about the BAOS SDK and the free download can be found at www.weinzierl.de

Installation and Connection

The KNX IP BAOS 777 is designed for installation on DIN rail with a width of 2 units (36 mm). It features the following controls (6 7 8 9) and displays (4 5):



An external power supply only needs to be connected if the IP switch in use does not support Power over Ethernet (PoE).

Access of settings

The settings of the device can be accessed via

1. Direct setting on the device
2. Internet browser and web interface
3. ETS (Version 4.2 or higher)

1. Direct setting on the device

i *Programming mode: The KNX programming mode is activated / deactivated by pressing the buttons 7 + 9 simultaneously.*

A. Startup and idle display

WEINZIERL
1.1.25 Unloaded
192.168.001.002

During startup of the device, the actual IP address is displayed (if the device is connected correctly). When display is idle after startup, the IP address, physical address and database are displayed.

i *After 5 minutes of inactivity the display will turn into screensaver mode (blank screen) to save power. Press any key to turn the display on again.*

B. Main menu

By pressing 7 (arrow down) you enter the **main menu** of the device. By pressing 9 (enter) you enter the **submenus**. Within the menus you can use 6 (arrow up) and 7 (arrow down) for **navigation**; 9 (enter) is for **confirmation** and 8 (escape) is to cancel / **go back** / one level higher.

C. Submenu IP Config

Ip: DHCP: ACCEPT
000.000.000.000
x Sub net mask:
000.000.000.000
Gateway:
000.000.000.000

Select **DHCP** or **Manual** for IP configuration. Within **Manual** you can set the IP, subnet and gateway. Use 6 and 7 to navigate/set and 9 to select.

i *Changing the IP address makes a new login necessary for the web interface.*

D. Submenu IP TUNNEL

IP TUNNEL
1:15.15.240 used
x 2:15.15.241 free
3:15.15.242 free
4:15.15.243 free

The KNX IP BAOS 777 supports 8 simultaneous KNXnet/IP tunneling connections. You can display them in the submenu IP Tunnel including their actual status.

E. Submenu IP BAOS

IP BAOS
Binary UDP:0 / 10
x Binary TCP:0 / 10

In this submenu, you can display Binary UDP and Binary TCP connections including their actual status.

F. Submenu INFO

INFO
SN : 00C500000000
x App ID: ...
App ST: Unloaded
Fw Rev: 0100020A
MAC : 010203040506

This submenu gives you information about the device's serial number, App ID, App status, Firmware revision, and MAC address.

G. Submenu RESET

RESET
x Press Long
RESTART DEVICE
MASTER RESET

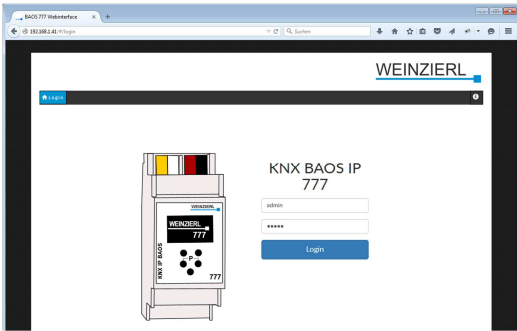
This submenu allows you to restart your device or to make a reset to factory settings (master reset). Select one option and then keep 9 pressed until the small animation is finished and the option is executed.

The **factory default settings** after a master reset are:

Physical device address: 15.15.255
Physical addresses of tunneling connections 15.15.240-247
IP address allocation: DHCP

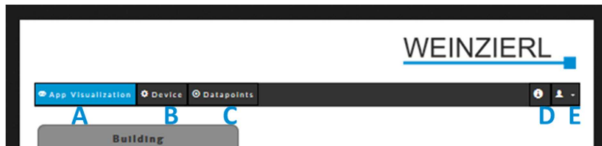
i *Master reset will make a new ETS download necessary.*

2. Internet browser and web interface



Thanks to an integrated web server, the KNX IP BAOS 777 can be accessed by its own web interface. The **address of the web interface** is `http://XXX.XXX.XXX.XXX` (the XXX stand for the device's IP address which is displayed on the device.)

i **User name and password** for the web interface are both `admin` by default and should be changed in the ETS via a download.



The web interface consists of (up to) **5 main menu points** in the navigation (depending on the loaded database – structured or generic):

- A. App Visualization
- B. Device
- C. Data Points
- D. Info and Help
- E. Logout

A. App Visualization

If the standard (structured) database is loaded the device will automatically generate the complete visualization of the building including all rooms and functions. You can open the building, control and set and also take a look at further details of your individual functions such as history and timers.

i **For a detailed description of the functions and their visualization, please see page 5ff of this manual.**

B. Device

This is the “settings” menu: it allows general settings of the device such as name, individual address, time and date and switching the device into programming mode.

Networks settings such as IP address, IP assignment, Sub Net Mask and Default Gateway can be set in this menu.

i **A new IP address makes a new client login necessary with the new IP address.**

“ETS section” contains information regarding the actual loaded ETS application.

“Connections” allow settings and monitoring of BAOS Binary UDP- and TCP-Client connections, BAOS Web Services, BAOS REST Services and KNXnet/IP Tunneling connections.

i **By deactivating the BAOS REST Services the Web interface will become inaccessible as well. To use the Web interface again a reactivation by ETS application download has to be done.**

The “Device” section allows you to enable and disable the configuration via the control buttons on the device itself. If disabled, the device menu will still be accessible to read information but changes cannot be done on the device itself.

Within “Web Application” section, the Webserver of the device can be enabled/disabled.

i **By deactivating the devices Webserver, which is also hosting the Web interface, the Web interface will become inaccessible.**

To use the Web interface again a reactivation of the Webserver by ETS application download has to be done.

The “Hardware/Versions” section gives you an overview about the Hardware and Firmware version of the device and you can restart the application or reboot the device.

As the device can be updated by the user, you can drag and drop the latest firmware file to update the KNX BAOS IP 777 (updates can be found on the product homepage at www.weinzierl.de). A step by step howto can be found in section ‘Firmware upgrade via web interface’.

i **An update, a restart or reboot logs you out of the web interface and you have to manually log into again.**

C. Data Points

Within this menu, all active set data points within your project can be monitored.

D. Info and Help

Here you can find additional information regarding the device and ETS database.

E. Logout

The user can logout off the Web interface in this section.

3. ETS – Connection Manager

Factory default settings:

IP address: DHCP

Individual KNX addresses:

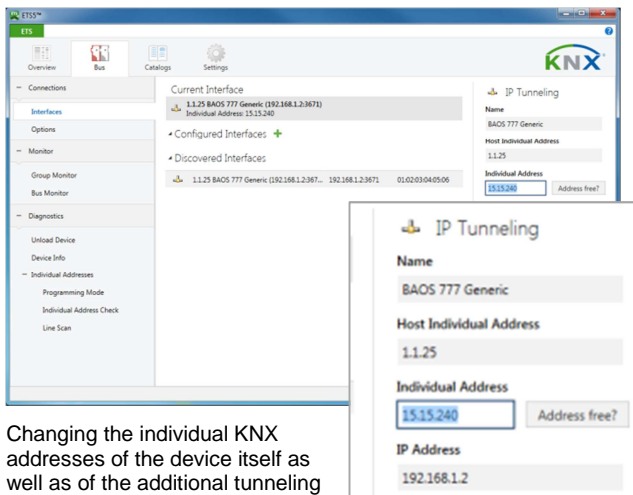
Device address: 15.15.255
 Tunneling 1: 15.15.240
 Tunneling 2: 15.15.241
 Tunneling 3: 15.15.242
 Tunneling 4: 15.15.243
 Tunneling 5: 15.15.244
 Tunneling 6: 15.15.245
 Tunneling 7: 15.15.246
 Tunneling 8: 15.15.247

After connecting the interface to your LAN as well as to your KNX bus and power supply, the ETS will discover the interface automatically within its bus section.

By clicking on the discovered KNX IP BAOS 777 it will become your current interface and the connection specific information will appear in the right column of the ETS window.

The Device Name and the Host Individual Address can only be changed within your ETS project.

Section 'Individual Address' enables you to change the physical KNX address of the currently used KNXnet/IP tunneling connection. To check if the address you want to assign is unique within your KNX installation you can click the button 'Address free?'



Changing the individual KNX addresses of the device itself as well as of the additional tunneling connections can be done within your ETS project after adding the KNX IP BAOS 777 to your ETS device tree.

By clicking on the KNX IP BAOS 777 device entry within your ETS projects topology view, an information column 'Properties' will appear on the right side of the ETS window.

Within the 'Settings' overview, you can change the name of the device. The 'Individual Address' section contains a list of all assigned individual KNX addresses. The Device address is the address of the device itself. This address is also visible within the topology tree view of your ETS project.

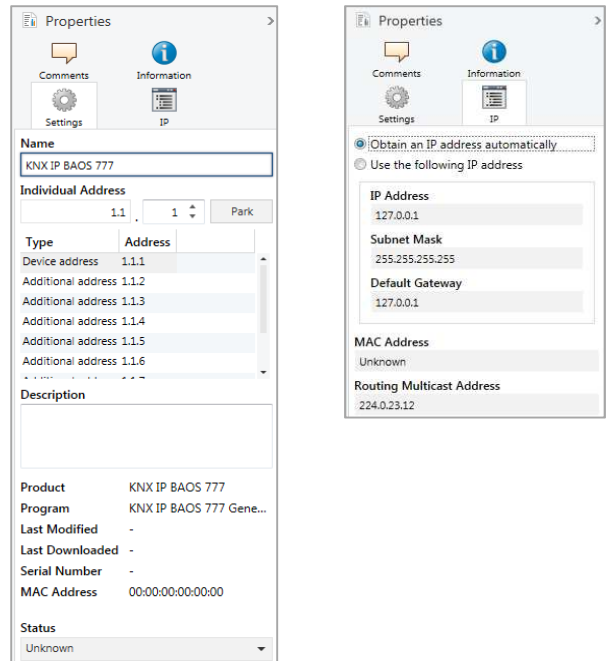
Additional address 1 to 8 are the individual KNX addresses of the KNXnet/IP tunneling connections the KNX IP BAOS 777 provides.

Each individual KNX address can be changed by clicking on the list entry and typing in the desired address into the 'Individual Address' text-field.

If the text-field frame switches to color red after entering the address, the address is already taken within your ETS project.

i Make sure that none of the addresses above are already present in your KNX installation.

Within the 'IP' overview the IP network specific options of the KNX IP BAOS 777 can be changed. Switching the radio button from 'Obtain an IP address automatically' (by DHCP) to 'Use the following IP address' (static IP address assignment) enables you to change the devices IP address to a static one of your choice.

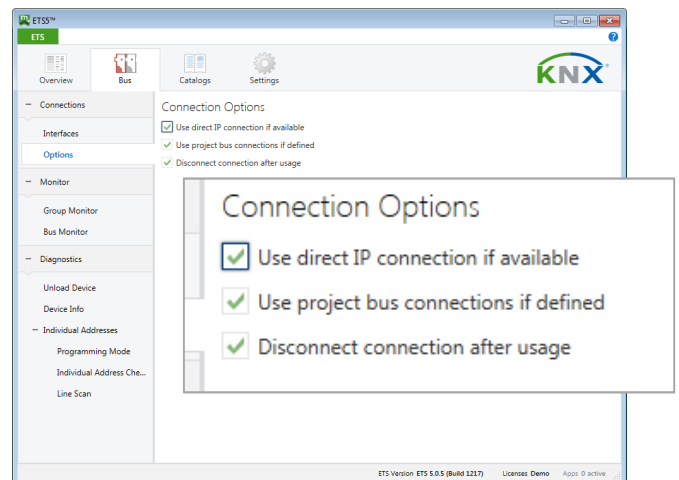


i All changes made in ETS Properties section are only active after an application download.

Faster downloads over IP

As with all devices on the KNX bus (twisted pair) a download can be carried out via the bus. However, the KNX IP BAOS 777 also has a LAN interface, which can be used for a quick download directly via IP. In this case, no additional KNX interface is required. The download over IP must be activated in the connection options of the ETS.

i Due to the significantly shorter transmission times it is recommended to perform downloads via IP.



The setting "Use direct IP connection if available" significantly speeds up the transfer between the ETS and the device as IP is used and not TP.

Configuration of the object server and web visualization

The functional core of the KNX IP BAOS devices is the so-called object server. The object server provides KNX group objects for the communication with the building installation via the KNX bus. The linking to other KNX devices is done via group address assignment in ETS.

The object server has storage for the values of all configured group objects. Technically speaking it holds process image for the building control system. For client access the KNX IP BAOS device provides a set of APIs (application programming interfaces) to read and write to the object values. So the client application is decoupled from timing constraints on the physical bus.

The default ETS entry for the KNX IP BAOS 777 allows configuring the group objects in the context of the structure of the building. This way semantic meta-data is generated which can be used by the client application.

The data configured in the KNX IP BAOS 777 represents the interface or even 'face' of the installation system to the user or to the non-KNX part of the installation. While in a complex installation many devices and functions are present, only a subset should be presented for the user.

With the parameter set of the KNX IP BAOS 777 the installer configures the functions to be exported. A function is not limited to a single group object, typically it is a set of objects. For example a light which has a status feedback is realized by a function holding two objects: one to control the light and a second receiving the current state. This relation is very important for using the data.

All functions are related to rooms or to the building as such. This is regardless of the real devices in the network. For example for the user it is important to know that a light is in the living room, he is not interested to know that the switching is done by a specific actuator in the electrical cabinet.

For the complete configuration only ETS® is required. There is no additional editor needed. All the information configured in KNX IP BAOS 777 is available for the connected client application. Typical applications are visualization tools provided by third parties.

The KNX IP BAOS 777 has an integrated web visualization, which uses the exactly the same configuration for its auto-generated graphical user interface. It can be used by the installer to immediately test all functions even if no client is connected.

Using the KNX IP BAOS 777 with the Default Application (Database with Building Structure)

The KNX IP BAOS 777 has a very flexible architecture and can cope with different ETS product entries. The following describes the default application with building structure



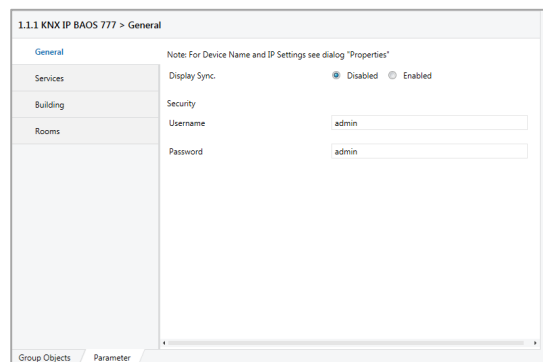
For development purpose a generic product entry is available as well and it is documented in a separate document. Please see the download section at www.weinzierl.de for more info.

The following chapter describes the configuration of the object server and the relation to the integrated web visualization.

When inserting a new device instance into a project no group objects are visible. All functions can be enabled via parameter settings. Via the device settings in ETS all functions and group objects can be configured. This information can be used by any client of the KNX IP BAOS 777 device. It is also used internally to setup the visualization app in the web frontend. As the controls of the visualization are directly related with the functions selected in the ETS parameters, screen shots show the corresponding controls.

A. General

This page allows the general settings of the device.



Display Sync. (Enabled / Disabled)

If enabled, a communication object 'Display Sync. – Trigger' appears. Each Weinzierl device with a display of this product range provides this parameter. As soon as the device wakes up, the associated group telegram will be sent to the KNX bus which wakes up every other device whose display synchronization group object is associated to the same group address.

Group Object	Type KNX	Size	Direction
1201: Display Sync. – Trigger	1.017	1 Bit	From / To KNX

Security / Username and Password

This is the login data to access the web interface of the device in a web browser. To open the web page of the device, just enter the IP address, which is visible on the display, as URL into the address field of your web browser.



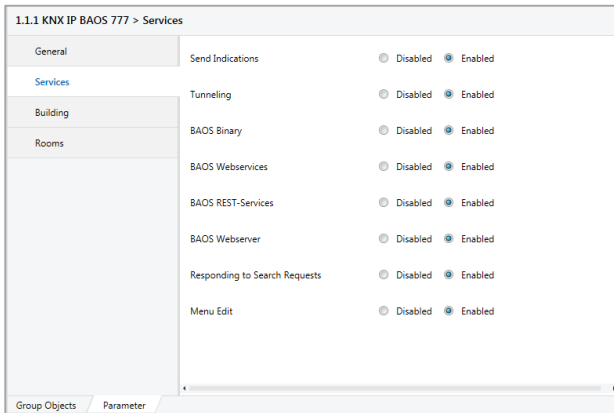
Username and password are both admin by default and should be changed.

B. Services

This page allows enabling or disabling the access to the device via different ways such as Tunneling, BAOS Binary, BAOS Webservices, and many more.



For security reasons, unused features should be disabled.



Send Indications (Enabled / Disabled)

If disabled, no indication will be sent to a client when the value of a datapoint changes.

Tunneling (Enabled / Disabled)

If disabled, all KNXnet/IP Tunneling connections will be disabled.



The ETS uses a KNXnet/IP Tunneling connection to get access to the KNX Bus by IP interfaces! After Tunneling is disabled, The KNX IP BAOS 777 can't be used as an ETS interface anymore!

BAOS Binary (Enabled / Disabled)

If disabled, access to object server datapoints over BAOS Binary protocol is not possible anymore.



Any client application which uses BAOS Binary protocol will not work anymore!

BAOS Webservices (Enabled / Disabled)

If disabled, access to object server datapoints over BAOS Webservices is not possible anymore.



Any client application which uses BAOS Webservices will not work anymore!

BAOS REST-Services (Enabled / Disabled)

If disabled, access to object server datapoints over BAOS REST-Services is not possible anymore.



*Any client application which uses BAOS REST-Services will not work anymore!
The WEBINTERFACE is based on BAOS REST-Services and will also stop working.*

BAOS Webserver (Enabled / Disabled)

If disabled, the Webserver of KNX IP BAOS 777 is turned off.



*The Webserver hosts the KNX IP BAOS 777 Webinterface. The Webinterface won't be accessible if the Webserver is disabled!
The WEBINTERFACE stops working!*

Responding to Search Requests (Enabled / Disabled)

If disabled, the KNX IP BAOS 777 will not respond to KNXnet/IP search requests.



The ETS software will not find the KNX IP BAOS 777 as programming interface automatically.

Menu Edit (Enabled / Disabled)

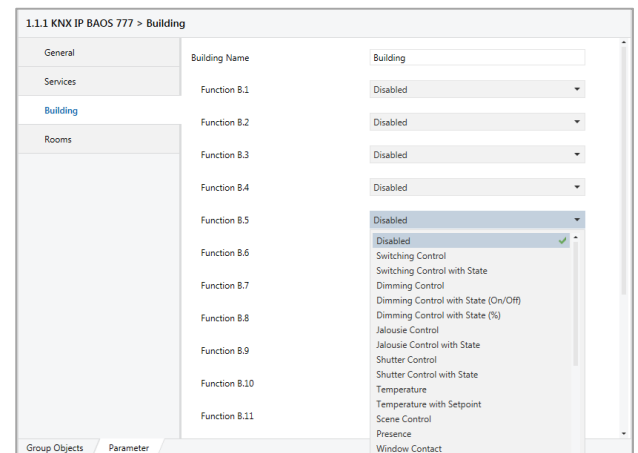
If disabled, the device menu of the KNX IP BAOS 777 will be disabled. Settings can't be changed via the device controls.



The RESET function (restart device, master reset) via device controls is also disabled.

C. Building

This page is provided for *all functions of a building which are not related to a single room*. For example, date and time is valid for the whole building. The same is true for wind and rain warning. Also the control for exterior lights can be configured here.

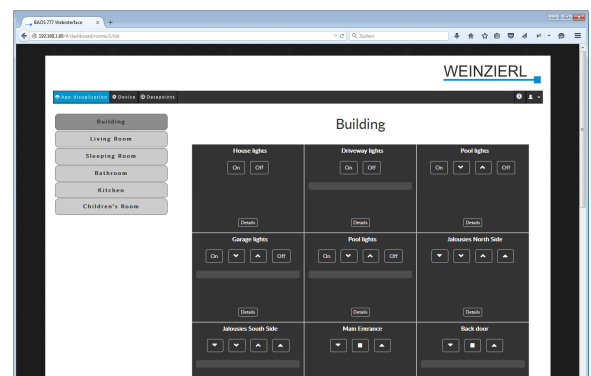


Building Name (free text input)

The name can be chosen freely. The maximum length of the name is 20 characters. The name of the building is used by the web frontend and available via web services.

Function B.1, B.2, ..., B.xx

On the page 'Building', 16 functions are provided which can be configured individually. Depending on the function setup, the web interface visualizes these building functions individually:



D. Rooms

This page is provided for *all functions related to specific rooms*. Up to 24 rooms can be set up – each room with a maximum of 10 basic functions and 6 extended functions.

1.1.1 KNX IP BAOS 777 > Rooms		
General	Room 1	<input type="radio"/> Disabled <input checked="" type="radio"/> Enabled
Services	Room 2	<input type="radio"/> Disabled <input checked="" type="radio"/> Enabled
Traumhaus	Room 3	<input type="radio"/> Disabled <input checked="" type="radio"/> Enabled
Rooms	Room 4	<input checked="" type="radio"/> Disabled <input type="radio"/> Enabled
Living Room	Room 5	<input checked="" type="radio"/> Disabled <input type="radio"/> Enabled
Guest Room	Room 6	<input checked="" type="radio"/> Disabled <input type="radio"/> Enabled
Kitchen	Room 7	<input checked="" type="radio"/> Disabled <input type="radio"/> Enabled
	Room 8	<input checked="" type="radio"/> Disabled <input type="radio"/> Enabled
	Room 9	<input checked="" type="radio"/> Disabled <input type="radio"/> Enabled
	Room 10	<input checked="" type="radio"/> Disabled <input type="radio"/> Enabled
	Room 11	<input checked="" type="radio"/> Disabled <input type="radio"/> Enabled

E. General functions overview

Building functions (max. 16 per building)

Switching Control
 Switching Control with State
 Dimming Control
 Dimming Control with State (On/Off)
 Dimming Control with State (%)
 Jalousie Control
 Jalousie Control with State
 Shutter Control
 Shutter Control with State
 Temperature
 Temperature with Setpoint
 Scene Control
 Presence
 Window Contact
 Door Contact
 Smoke Alert
 Water Alert
 RGB Control with State
 Time
 Date
 HVAC Mode
 Door Bell / Opener
 Burglary Alert
 Rain Alert
 Wind Alert
 Outdoor Temperature
 Universal 1 Bit State
 Universal Scaling Control
 Universal Scaling State
 Universal Scaling Control State
 Universal 2 Byte Floatvalue State
 Universal 4 Byte Floatvalue State

Basic room functions (max. 10 per room)

Switching Control
 Switching Control with State
 Dimming Control
 Dimming Control with State (On/Off)
 Dimming Control with State (%)
 Jalousie Control
 Jalousie Control with State
 Shutter Control
 Shutter Control with State
 Temperature
 Temperature with Setpoint
 Scene Control
 RGB Control with State

Extended room functions (max. 6 per room)

Switching Control
 Switching Control with State
 Dimming Control
 Dimming Control with State (On/Off)
 Dimming Control with State (%)
 Jalousie Control
 Jalousie Control with State
 Shutter Control
 Shutter Control with State
 Temperature
 Temperature with Setpoint
 Scene Control
 Presence
 Window Contact
 Door Contact
 Smoke Alert
 Water Alert
 RGB Control with State
 Universal 1 Bit State
 Universal Scaling Control
 Universal Scaling State
 Universal Scaling Control State
 Universal 2 Byte Floatvalue State
 Universal 4 Byte Floatvalue State

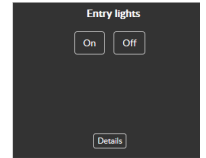


1. Switching Control

This function controls a switching actuator. The following group object will be available:

Group Object	Type KNX	Size	Direction
Function B.X : Switching – On/Off	1.001	1 Bit	To KNX

In the visualization app of the **Web interface** this selection generates this control:

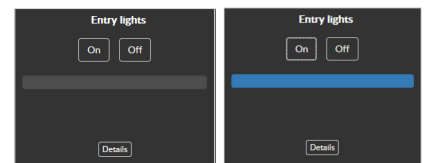


2. Switching Control with State

This function controls a switching actuator with state feedback. The following group objects will be available:

Group Object	Type KNX	Size	Direction
Function B.X : Switching – On/Off	1.001	1 Bit	To KNX
Function B.X : Switching – State	1.001	1 Bit	From KNX

Web interface
 (including indication of "off" and "on")

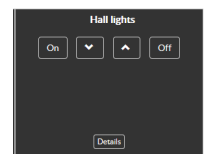


3. Dimming Control

This function controls a dimming actuator. The following group objects will be available:

Group Object	Type KNX	Size	Direction
Function B.X : Dimming – On/Off	1.001	1 Bit	To KNX
Function B.X : Dimming – Relative	3.007	4 Bit	To KNX

Web interface

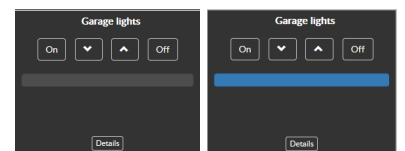


4. Dimming Control with State (On/Off)

This function controls a dimming actuator with state feedback. The following group objects will be available:

Group Object	Type KNX	Size	Direction
Function B.X : Dimming – On/Off	1.001	1 Bit	To KNX
Function B.X : Dimming – Relative	3.007	4 Bit	To KNX
Function B.X : Dimming – On/Off	1.001	1 Bit	From KNX

Web interface
 (including indication of "off" and "on")



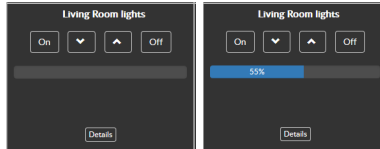


5. Dimming Control with State (%)

This function controls a dimming actuator with state feedback. The following group objects will be available:

Group Object	Type KNX	Size	Direction
Function B.X : Dimming – On/Off	1.001	1 Bit	To KNX
Function B.X : Dimming – Relative	3.007	4 Bit	To KNX
Function B.X : Dimming – Value St.	5.001	1 Byte	From KNX

Web interface
(including indication of state in percent)



6. Jalousie Control

This function controls a jalousie actuator. The following group objects will be available:

Group Object	Type KNX	Size	Direction
Function B.X : Jalousie - up/down	1.008	1 Bit	To KNX
Function B.X : Jalousie - step/stop	1.007	1 Bit	To KNX

Web interface

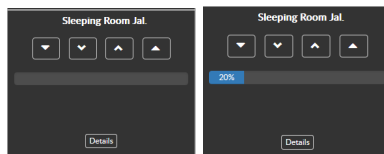


7. Jalousie Control with State

This function controls a jalousie actuator with state feedback. The following group objects will be available:

Group Object	Type KNX	Size	Direction
Function B.X : Jalousie - up/down	1.008	1 Bit	To KNX
Function B.X : Jalousie - step/stop	1.007	1 Bit	To KNX
Function B.X : Jalousie - Value St.	5.001	1 Byte	From KNX

Web interface
(including indication of state in percent)

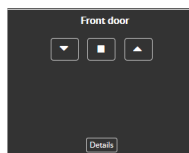


8. Shutter Control

This function controls a shutter actuator. The following group object will be available:

Group Object	Type KNX	Size	Direction
Function B.X : Shutter – up/down	1.008	1 Bit	To KNX
Function B.X : Shutter: – Stop	1.010	1 Bit	To KNX

Web interface

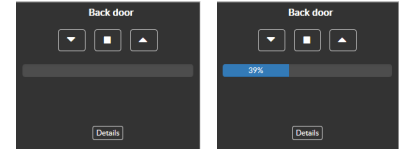


9. Shutter Control with State

This function controls a shutter actuator with state feedback. The following group object will be available:

Group Object	Type KNX	Size	Direction
Function B.X: Shutter – up/down	1.008	1 Bit	To KNX
Function B.X : Shutter – Stop	1.010	1 Bit	To KNX
Function B.X : Shutter – Value St.	5.001	1 Byte	From KNX

Web interface
(including indication of state in percent)

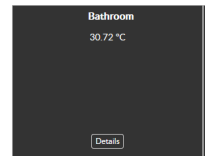


10. Temperature

This function monitors a temperature sensor. The following group object will be available:

Group Object	Type KNX	Size	Direction
Function B.X : Temp. – State	9.001	2 Bytes	From KNX

Web interface



11. Temperature with Setpoint

This function monitors a temperature sensor with controls. The following group object will be available:

Group Object	Type KNX	Size	Direction
Function B.X : Temp. – State	9.001	2 Bytes	From KNX
Function B.X : Temp. – Set Point	9.001	2 Bytes	To KNX

Web interface

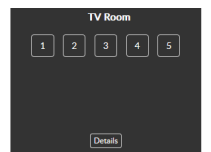


12. Scene Control

This function controls scenes. The following group object will be available:

Group Object	Type KNX	Size	Direction
Function B.X : Scene - Number	18.001	1 Byte	To KNX

Web interface
(5 scenes are available)



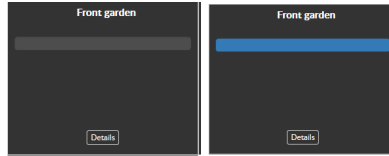


13. Presence

This function monitors a presence detector. The following group object will be available:

Group Object	Type KNX	Size	Direction
Function B.X : Presence – State	1.002	1 Bit	From KNX

Web interface
(indication of “inactive” and “active”)

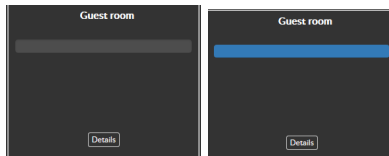


14. Window Contact

This function monitors a window contact. The following group object will be available:

Group Object	Type KNX	Size	Direction
Function B.X : Contact – State	1.019	1 Bit	From KNX

Web interface
(indication of “closed” and “open”)

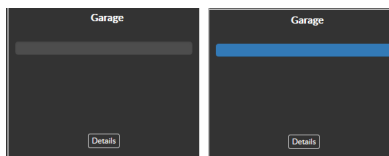


15. Door Contact

This function monitors a door contact. The following group object will be available:

Group Object	Type KNX	Size	Direction
Function B.X : Contact – State	1.019	1 Bit	From KNX

Web interface
(indication of “closed” and “open”)

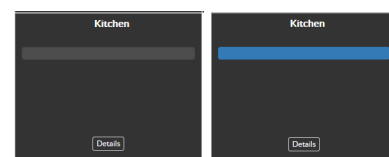


16. Smoke Alert

This function monitors a smoke alert sensor. The following group object will be available:

Group Object	Type KNX	Size	Direction
Function B.X : Smoke Alert – State	1.002	1 Bit	From KNX

Web interface
(indication of “off” and “on”)

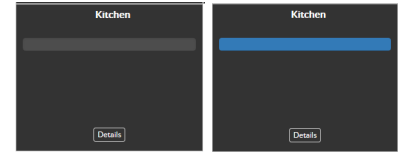


17. Water Alert

This function monitors a water alert sensor. The following group object will be available:

Group Object	Type KNX	Size	Direction
Function B.X : Water Alert – State	1.002	1 Bit	From KNX

Web interface
(indication of “off” and “on”)

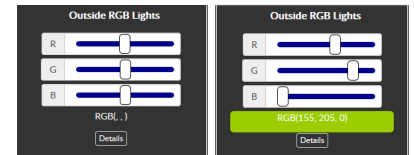


18. RGB Control with State

This function controls a RGB light. The following group objects will be available:

Group Object	Type KNX	Size	Direction
Function B.X: RGB – control	232.600	3 Bytes	To KNX
Function B.X : RGB – state	232.600	3 Bytes	From KNX

Web interface
(including a setting and display of the RGB values)

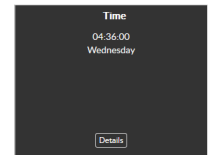


19. Time

This function displays a clock. The following group object will be available:

Group Object	Type KNX	Size	Direction
Function B.X :Time	10.001	3 Bytes	From KNX

Web interface

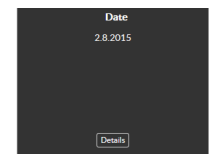


20. Date

This function displays a clock. The following group object will be available:

Group Object	Type KNX	Size	Direction
Function B.X : Date	11.001	3 Bytes	From KNX

Web interface





21. HVAC Mode

This function controls an air conditioning or heating. The following group object will be available:

Group Object	Type KNX	Size	Direction
Function B.X : HVAC – State	20.102	1 Byte	To KNX

Web interface

(including display of actual setting)



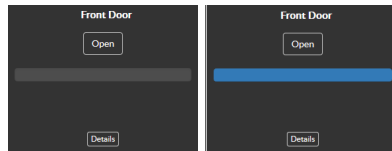
22. Door Bell / Opener

This function controls a door opener and monitors the door bell. The following group objects will be available:

Group Object	Type KNX	Size	Direction
Function B.X : Door opener	1.009	1 Bit	To KNX
Function B.X : Door bell	1.001	1 Bit	From KNX

Web interface

(indication of “closed” and “open”)



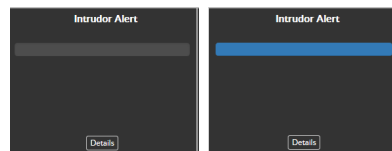
23. Burglary Alert

This function monitors an alert system or motion detection sensor. The following group object will be available:

Group Object	Type KNX	Size	Direction
Function B.X : Burglary Al. – State	1.002	1 Bit	From KNX

Web interface

(indication of “inactive” and “active”)



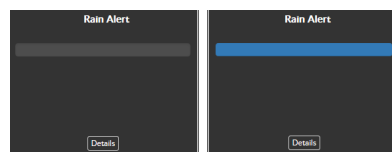
24. Rain Alert

This function monitors a rain sensor. The following group object will be available:

Group Object	Type KNX	Size	Direction
Function B.X : Rain Alert – State	1.002	1 Bit	From KNX

Web interface

(indication of “inactive” and “active”)



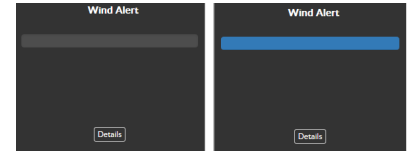
25. Wind Alert

This function monitors a wind sensor. The following group object will be available:

Group Object	Type KNX	Size	Direction
Function B.X : Wind Alert – State	1.002	1 Bit	From KNX

Web interface

(including indication of “inactive” and “active”)

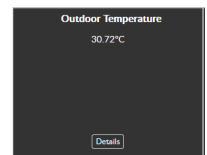


26. Outdoor Temperature

This function monitors an outdoor temperature sensor. The following group object will be available:

Group Object	Type KNX	Size	Direction
Function B.X : Temp. – State	9.001	2 Bytes	From KNX

Web interface



Further functions

With 26 predefined functions, the KNX IP BAOS 777 is offering powerful control and monitoring solutions for a broad variety of home automation applications.

However, if you need to implement further individual applications the device offers 6 universal functions which can be configured individually according to your needs:

27. Universal 1 Bit State

Group Object	Type KNX	Size	Direction
Function B.X : State	1.XXX	1 Bit	To KNX

Web interface



28. Universal Scaling Control

Group Object	Type KNX	Size	Direction
Function B.X : Various	5.XXX	1 Byte	To KNX

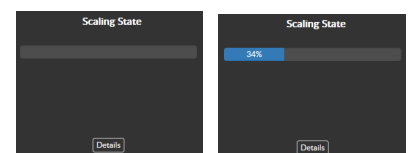
Web interface



29. Universal Scaling State

Group Object	Type KNX	Size	Direction
Function B.X : State	5.XXX	1 Byte	From KNX

Web interface



30. Universal Scaling Control State

Group Object	Type KNX	Size	Direction
Function B.X : State	5.XXX	1 Byte	From KNX
Function B.X : Control	5.XXX	1 Byte	To KNX

Web interface



31. Universal 2 Byte Floatvalue State

Group Object	Type KNX	Size	Direction
Function B.X : State	9.XXX	2 Bytes	From KNX

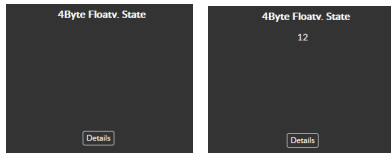
Web interface



32. Universal 4 Byte Floatvalue State

Group Object	Type KNX	Size	Direction
Function B.X : State	14.XXX	4 Bytes	From KNX

Web interface

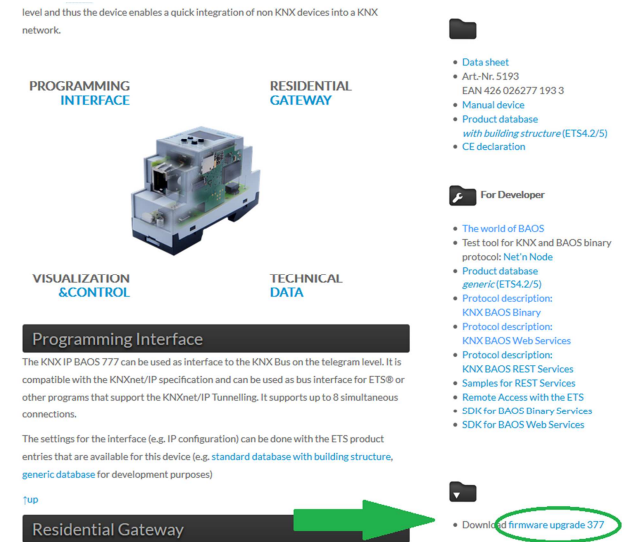


4. Firmware Upgrade

The actual firmware version can be found within the KNX IP BAOS 777 web interface. Navigate to the web interface by typing the IP address of the device into your web browsers address line. The actual firmware version is shown in the lower right corner of the page.



To download the new firmware version go to www.weinzierl.de and navigate to the product website of the KNX IP BAOS 777. The download link of the newest firmware release can be found on the right side of the page within the download column.



Download the latest firmware release and save it locally to your computer.

The firmware update achieved via the web interface of the KNX IP BAOS 777.

Login to the web interface and scroll down to section 'Device update' at the bottom of the page.



You can either drag and drop the downloaded firmware file into the drop down section or click on the dropdown section and a

'select file' dialog will appear where you can navigate to the firmware file and select it.



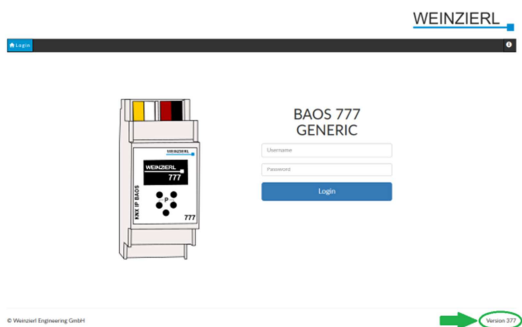
After the firmware file has been chosen, the update will start automatically.



To complete the update, the device will restart itself and go into Updating mode. The update procedure typically takes around one minute.



When the update is complete, the new firmware version is shown on the lower right corner.



5. Open source licenses

This product contains software whose right holders license it under the terms of the GNU General Public License, version 2 (GPLv2) and/or other open source software licenses. If you want to receive the complete corresponding source code we will provide you and any third party with the source code of the software licensed under an open source software license if you send us a written request by mail or email to the following addresses:

Email: Weinzierl support team: support@weinzierl.de

Postal: Weinzierl Engineering GmbH
Achatz 3
DE-84508 Burgkirchen / Alz

containing the name of the product and the firmware version for which you want the source code and indicating how we can contact you.

The full text of the GPLv2 and OpenSSL license are included below.

This offer is valid for 3 years after the discontinuation of the service for this product.



WARNING

- The device may be built into distribution boards (230/400V).
- The device must be mounted and commissioned by an authorized electrician.
- The prevailing safety rules must be heeded.
- The device must not be opened.
- For planning and construction of electric installations, the relevant guidelines, regulations and standards of the respective country are to be considered.



Weinzierl Engineering GmbH

D-84508 Burgkirchen / Alz
Germany
<http://www.weinzierl.de>
info@weinzierl.de

General public license V2

1 GNU GENERAL PUBLIC LICENSE

Version 2, June 1991

Copyright (C) 1989, 1991 Free Software Foundation, Inc.
51 Franklin Street, Fifth Floor, Boston, MA 02110-1301, USA

Everyone is permitted to copy and distribute verbatim copies of this license document, but changing it is not allowed.

2 Preamble

The licenses for most software are designed to take away your freedom to share and change it. By contrast, the GNU General Public License is intended to guarantee your freedom to share and change free software--to make sure the software is free for all its users. This General Public License applies to most of the Free Software Foundation's software and to any other program whose authors commit to using it. (Some other Free Software Foundation software is covered by the GNU Lesser General Public License instead.) You can apply it to your programs, too.

When we speak of free software, we are referring to freedom, not price. Our General Public Licenses are designed to make sure that you have the freedom to distribute copies of free software (and charge for this service if you wish), that you receive source code or can get it if you want it, that you can change the software or use pieces of it in new free programs; and that you know you can do these things.

To protect your rights, we need to make restrictions that forbid anyone to deny you these rights or to ask you to surrender the rights. These restrictions translate to certain responsibilities for you if you distribute copies of the software, or if you modify it.

For example, if you distribute copies of such a program, whether gratis or for a fee, you must give the recipients all the rights that you have. You must make sure that they, too, receive or can get the source code. And you must show them these terms so they know their rights.

We protect your rights with two steps: (1) copyright the software, and (2) offer you this license which gives you legal permission to copy, distribute and/or modify the software.

Also, for each author's protection and ours, we want to make certain that everyone understands that there is no warranty for this free software. If the software is modified by someone else and passed on, we want its recipients to know that what they have is not the original, so that any problems introduced by others will not reflect on the original authors' reputations.

Finally, any free program is threatened constantly by software patents. We wish to avoid the danger that redistributors of a free program will individually obtain patent licenses, in effect making the program proprietary. To prevent this, we have made it clear that any patent must be licensed for everyone's free use or not licensed at all.

The precise terms and conditions for copying, distribution and modification follow.

3 TERMS AND CONDITIONS FOR COPYING, DISTRIBUTION AND MODIFICATION

0. This License applies to any program or other work which contains a notice placed by the copyright holder saying it may be distributed under the terms of this General Public License. The "Program", below, refers to any such program or work, and a "work based on the Program" means either the Program or any derivative work under copyright law: that is to say, a work containing the Program or a portion of it, either verbatim or with modifications and/or translated into another language. (Hereinafter, translation is included without limitation in the term "modification".) Each licensee is addressed as "you".

Activities other than copying, distribution and modification are not covered by this License; they are outside its scope. The act of running the Program is not restricted, and the output from the Program is covered only if its contents constitute a work based on the Program (independent of having been made by running the Program). Whether that is true depends on what the Program does.

1. You may copy and distribute verbatim copies of the Program's source code as you receive it, in any medium, provided that you conspicuously and appropriately publish on each copy an appropriate copyright notice and disclaimer of warranty; keep intact all the notices that refer to this License and to the absence of any warranty; and give any other recipients of the Program a copy of this License along with the Program.

You may charge a fee for the physical act of transferring a copy, and you may at your option offer warranty protection in exchange for a fee.

2. You may modify your copy or copies of the Program or any portion of it, thus forming a work based on the Program, and copy and distribute such modifications or work under the terms of Section 1 above, provided that you also meet all of these conditions:

- a) You must cause the modified files to carry prominent notices stating that you changed the files and the date of any change.
- b) You must cause any work that you distribute or publish, that in whole or in part contains or is derived from the Program or any part thereof, to be licensed as a whole at no charge to all third parties under the terms of this License.
- c) If the modified program normally reads commands interactively when run, you must cause it, when started running for such interactive use in the most ordinary way, to print or display an announcement including an appropriate copyright notice and a notice that there is no warranty (or else, saying that you provide a warranty) and that users may redistribute the program under these conditions, and telling the user how to view a copy of this License. (Exception: if the Program itself is interactive but does not normally print such an announcement, your work based on the Program is not required to print an announcement.)

These requirements apply to the modified work as a whole. If identifiable sections of that work are not derived from the Program, and can be reasonably considered independent and separate works in themselves, then this License, and its terms, do not apply to those sections when you distribute them as separate works. But when you distribute the same sections as part of a whole which is a work based on the Program, the distribution of the whole must be on the terms of this License, whose permissions for other licensees extend to the entire whole, and thus to each and every part regardless of who wrote it.

Thus, it is not the intent of this section to claim rights or contest your rights to work written entirely by you; rather, the intent is to exercise the right to control the distribution of derivative or collective works based on the Program.

In addition, mere aggregation of another work not based on the Program with the Program (or with a work based on the Program) on a volume of a storage or distribution medium does not bring the other work under the scope of this License.

3. You may copy and distribute the Program (or a work based on it, under Section 2) in object code or executable form under the terms of Sections 1 and 2 above provided that you also do one of the following:

- a) Accompany it with the complete corresponding machine-readable source code, which must be distributed under the terms of Sections 1 and 2 above on a medium customarily used for software interchange; or,
- b) Accompany it with a written offer, valid for at least three years, to give any third party, for a charge no more than your cost of physically performing source distribution, a complete machine-readable copy of the corresponding source code, to be distributed under the terms of Sections 1 and 2 above on a medium customarily used for software interchange; or,
- c) Accompany it with the information you received as to the offer to distribute corresponding source code. (This alternative is allowed only for noncommercial distribution and only if you received the program in object code or executable form with such an offer, in accord with Subsection b above.)

The source code for a work means the preferred form of the work for making modifications to it. For an executable work, complete source code means all the source code for all modules it contains, plus any associated interface definition files, plus the scripts used to control compilation and installation of the executable. However, as a special exception, the source code distributed need not include anything that is normally distributed (in either source or binary form) with the major components (compiler, kernel, and so on) of the operating system on which the executable runs, unless that component itself accompanies the executable.

If distribution of executable or object code is made by offering access to copy from a designated place, then offering equivalent access to copy the source code from the same place counts as distribution of the source code, even though third parties are not compelled to copy the source along with the object code.

4. You may not copy, modify, sublicense, or distribute the Program except as expressly provided under this License. Any attempt otherwise to copy, modify, sublicense or distribute the Program is void, and will automatically terminate your rights under this License. However, parties who have received copies, or rights, from you under this License will not have their licenses terminated so long as such parties remain in full compliance.

5. You are not required to accept this License, since you have not signed it. However, nothing else grants you permission to modify or distribute the Program or its derivative works. These actions are prohibited by law if you do not accept this License. Therefore, by modifying or distributing the Program (or any work based on the Program), you indicate your acceptance of this License to do so, and all its terms and conditions for copying, distributing or modifying the Program or works based on it.

6. Each time you redistribute the Program (or any work based on the Program), the recipient automatically receives a license from the original licensor to copy, distribute or modify the Program subject to these terms and conditions. You may not impose any further restrictions on the recipients' exercise of the rights granted herein. You are not responsible for enforcing compliance by third parties to this License.

7. If, as a consequence of a court judgment or allegation of patent infringement or for any other reason (not limited to patent issues), conditions are imposed on you (whether by court order, agreement or otherwise) that contradict the conditions of this License, they do not excuse you from the conditions of this License. If you cannot distribute so as to satisfy simultaneously your obligations under this License and any other pertinent obligations, then as a consequence you may not distribute the Program at all. For example, if a patent license would not permit royalty-free redistribution of the Program by all those who receive copies directly or indirectly through you, then the only way you could satisfy both it and this License would be to refrain entirely from distribution of the Program.

If any portion of this section is held invalid or unenforceable under any particular circumstance, the balance of the section is intended to apply and the section as a whole is intended to apply in other circumstances.

It is not the purpose of this section to induce you to infringe any patents or other property right claims or to contest validity of any such claims; this section has the sole purpose of protecting the integrity of the free software distribution system, which is implemented by public license practices. Many people have made generous contributions to the wide range of software distributed through that system in reliance on consistent application of that system; it is up to the author/donor to decide if he or she is willing to distribute software through any other system and a licensee cannot impose that choice.

This section is intended to make thoroughly clear what is believed to be a consequence of the rest of this License.

8. If the distribution and/or use of the Program is restricted in certain countries either by patents or by copyrighted interfaces, the original copyright holder who places the Program under this License may add an explicit geographical distribution limitation excluding those countries, so that distribution is permitted only in or among countries not thus excluded. In such case, this License incorporates the limitation as if written in the body of this License.

9. The Free Software Foundation may publish revised and/or new versions of the General Public License from time to time. Such new versions will be similar in spirit to the present version, but may differ in detail to address new problems or concerns.

Each version is given a distinguishing version number. If the Program specifies a version number of this License which applies to it and "any later version", you have the option of following the terms and conditions either of that version or of any later version published by the Free Software Foundation. If the Program does not specify a version number of this License, you may choose any version ever published by the Free Software Foundation.

10. If you wish to incorporate parts of the Program into other free programs whose distribution conditions are different, write to the author to ask for permission. For software which is copyrighted by the Free Software Foundation, write to the Free Software Foundation; we sometimes make exceptions for this. Our decision will be guided by the two goals of preserving the free status of all derivatives of our free software and of promoting the sharing and reuse of software generally.

NO WARRANTY

11. BECAUSE THE PROGRAM IS LICENSED FREE OF CHARGE, THERE IS NO WARRANTY FOR THE PROGRAM, TO THE EXTENT PERMITTED BY APPLICABLE LAW. EXCEPT WHEN OTHERWISE STATED IN WRITING THE COPYRIGHT HOLDERS AND/OR OTHER PARTIES PROVIDE THE PROGRAM "AS IS" WITHOUT WARRANTY OF ANY KIND, EITHER EXPRESSED OR IMPLIED, INCLUDING, BUT NOT LIMITED TO, THE IMPLIED WARRANTIES OF MERCHANTABILITY AND FITNESS FOR A PARTICULAR PURPOSE. THE ENTIRE RISK AS TO THE QUALITY AND PERFORMANCE OF THE PROGRAM IS WITH YOU. SHOULD THE PROGRAM PROVE DEFECTIVE, YOU ASSUME THE COST OF ALL NECESSARY SERVICING, REPAIR OR CORRECTION.

12. IN NO EVENT UNLESS REQUIRED BY APPLICABLE LAW OR AGREED TO IN WRITING WILL ANY COPYRIGHT HOLDER, OR ANY OTHER PARTY WHO MAY MODIFY AND/OR REDISTRIBUTE THE PROGRAM AS PERMITTED ABOVE, BE LIABLE TO YOU FOR DAMAGES, INCLUDING ANY GENERAL, SPECIAL, INCIDENTAL OR CONSEQUENTIAL DAMAGES ARISING OUT OF THE USE OR INABILITY TO USE THE PROGRAM (INCLUDING BUT NOT LIMITED TO LOSS OF DATA OR DATA BEING RENDERED INACCURATE OR LOSSES SUSTAINED BY YOU OR THIRD PARTIES OR A FAILURE OF THE PROGRAM TO OPERATE WITH ANY OTHER PROGRAMS), EVEN IF SUCH HOLDER OR OTHER PARTY HAS BEEN ADVISED OF THE POSSIBILITY OF SUCH DAMAGES.

4 END OF TERMS AND CONDITIONS

OpenSSL License

<https://www.openssl.org/source/license.html>

LICENSE ISSUES
=====

The OpenSSL toolkit stays under a double license, i.e. both the conditions of the OpenSSL License and the original SSLeay license apply to the toolkit. See below for the actual license texts.

OpenSSL License

/* =====

```

* Copyright (c) 1998-2018 The OpenSSL Project. All rights reserved.
*
* Redistribution and use in source and binary forms, with or without
* modification, are permitted provided that the following conditions
* are met:
*
* 1. Redistributions of source code must retain the above copyright
* notice, this list of conditions and the following disclaimer.
*
* 2. Redistributions in binary form must reproduce the above copyright
* notice, this list of conditions and the following disclaimer in
* the documentation and/or other materials provided with the
* distribution.
*
* 3. All advertising materials mentioning features or use of this
* software must display the following acknowledgment:
* "This product includes software developed by the OpenSSL Project
* for use in the OpenSSL Toolkit. (http://www.openssl.org/)"
*
* 4. The names "OpenSSL Toolkit" and "OpenSSL Project" must not be used to
* endorse or promote products derived from this software without
* prior written permission. For written permission, please contact
* openssl-core@openssl.org.
*
* 5. Products derived from this software may not be called "OpenSSL"
* nor may "OpenSSL" appear in their names without prior written
* permission of the OpenSSL Project.
*
* 6. Redistributions of any form whatsoever must retain the following
* acknowledgment:
* "This product includes software developed by the OpenSSL Project
* for use in the OpenSSL Toolkit (http://www.openssl.org/)"
*
* THIS SOFTWARE IS PROVIDED BY THE OpenSSL PROJECT ``AS IS'' AND ANY
* EXPRESSED OR IMPLIED WARRANTIES, INCLUDING, BUT NOT LIMITED TO, THE
* IMPLIED WARRANTIES OF MERCHANTABILITY AND FITNESS FOR A PARTICULAR
* PURPOSE ARE DISCLAIMED. IN NO EVENT SHALL THE OpenSSL PROJECT OR
* ITS CONTRIBUTORS BE LIABLE FOR ANY DIRECT, INDIRECT, INCIDENTAL,
* SPECIAL, EXEMPLARY, OR CONSEQUENTIAL DAMAGES (INCLUDING, BUT
* NOT LIMITED TO, PROCUREMENT OF SUBSTITUTE GOODS OR SERVICES;
* LOSS OF USE, DATA, OR PROFITS; OR BUSINESS INTERRUPTION)
* HOWEVER CAUSED AND ON ANY THEORY OF LIABILITY, WHETHER IN CONTRACT,
* STRICT LIABILITY, OR TORT (INCLUDING NEGLIGENCE OR OTHERWISE)
* ARISING IN ANY WAY OUT OF THE USE OF THIS SOFTWARE, EVEN IF ADVISED
* OF THE POSSIBILITY OF SUCH DAMAGE.
* =====
*
* This product includes cryptographic software written by Eric Young
* (eay@cryptsoft.com). This product includes software written by Tim
* Hudson (tjh@cryptsoft.com).
*
*/

```

Original SSLeay License

```

/* Copyright (C) 1995-1998 Eric Young (eay@cryptsoft.com)
* All rights reserved.
*
* This package is an SSL implementation written
* by Eric Young (eay@cryptsoft.com).
* The implementation was written so as to conform with Netscapes SSL.
*
* This library is free for commercial and non-commercial use as long as
* the following conditions are aheared to. The following conditions
* apply to all code found in this distribution, be it the RC4, RSA,
* lhash, DES, etc., code; not just the SSL code. The SSL documentation
* included with this distribution is covered by the same copyright terms
* except that the holder is Tim Hudson (tjh@cryptsoft.com).
*

```



```

* Copyright remains Eric Young's, and as such any Copyright notices in
* the code are not to be removed.
* If this package is used in a product, Eric Young should be given attribution
* as the author of the parts of the library used.
* This can be in the form of a textual message at program startup or
* in documentation (online or textual) provided with the package.
*
* Redistribution and use in source and binary forms, with or without
* modification, are permitted provided that the following conditions
* are met:
* 1. Redistributions of source code must retain the copyright
* notice, this list of conditions and the following disclaimer.
* 2. Redistributions in binary form must reproduce the above copyright
* notice, this list of conditions and the following disclaimer in the
* documentation and/or other materials provided with the distribution.
* 3. All advertising materials mentioning features or use of this software
* must display the following acknowledgement:
* "This product includes cryptographic software written by
* Eric Young (eay@cryptsoft.com)"
* The word 'cryptographic' can be left out if the routines from the library
* being used are not cryptographic related :-).
* 4. If you include any Windows specific code (or a derivative thereof) from
* the apps directory (application code) you must include an acknowledgement:
* "This product includes software written by Tim Hudson (tjh@cryptsoft.com)"
*
* THIS SOFTWARE IS PROVIDED BY ERIC YOUNG ``AS IS'' AND
* ANY EXPRESS OR IMPLIED WARRANTIES, INCLUDING, BUT NOT LIMITED TO, THE
* IMPLIED WARRANTIES OF MERCHANTABILITY AND FITNESS FOR A PARTICULAR PURPOSE
* ARE DISCLAIMED. IN NO EVENT SHALL THE AUTHOR OR CONTRIBUTORS BE LIABLE
* FOR ANY DIRECT, INDIRECT, INCIDENTAL, SPECIAL, EXEMPLARY, OR CONSEQUENTIAL
* DAMAGES (INCLUDING, BUT NOT LIMITED TO, PROCUREMENT OF SUBSTITUTE GOODS
* OR SERVICES; LOSS OF USE, DATA, OR PROFITS; OR BUSINESS INTERRUPTION)
* HOWEVER CAUSED AND ON ANY THEORY OF LIABILITY, WHETHER IN CONTRACT, STRICT
* LIABILITY, OR TORT (INCLUDING NEGLIGENCE OR OTHERWISE) ARISING IN ANY WAY
* OUT OF THE USE OF THIS SOFTWARE, EVEN IF ADVISED OF THE POSSIBILITY OF
* SUCH DAMAGE.
*
* The licence and distribution terms for any publically available version or
* derivative of this code cannot be changed. i.e. this code cannot simply be
* copied and put under another distribution licence
* [including the GNU Public Licence.]
*/

```